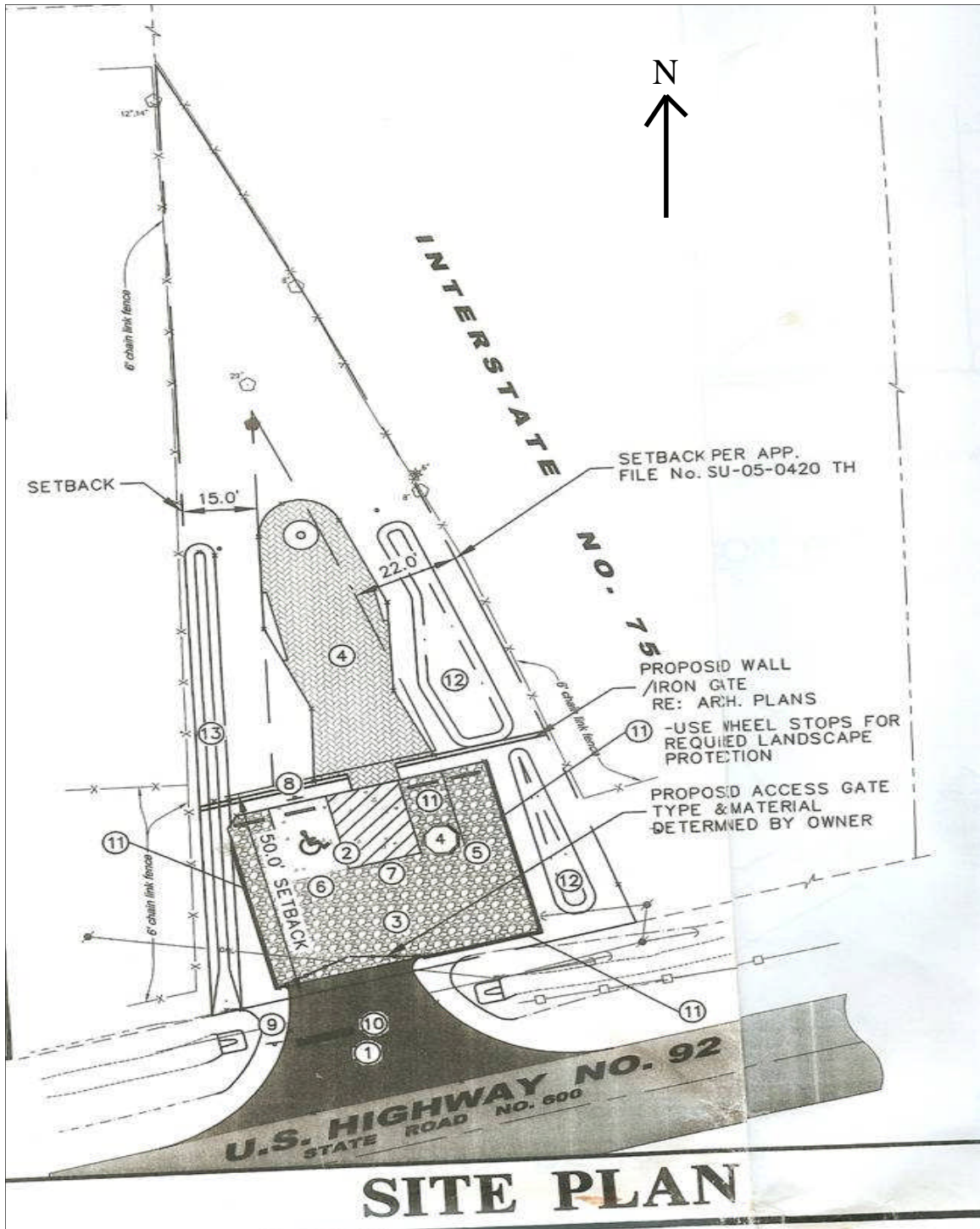


TAMPA SITE – CONFEDERATE MEMORIAL PARK

Flags Across Florida, Sons of Confederate Veterans



This “take” from the blueprints is a result of the conception of the design architect and was produced by the engineer. This is exactly how this site is being constructed. The following design clarifications are needed to gather in the full vision. The “proposed access gate” will actually be an electric gliding gate which will open at 7 AM and close automatically at 9 PM. The asphalt paving will not only cover the access driveway but will over all the parking area. The wall, noted by the #8 above will be a low 2 foot red brick wall with four feet of wrought iron on top of the wall. There will be a four foot wrought iron fence around the entire front of the property south of the wall. A 2 foot brick wall will encompass the courtyard (#4). Two oak trees and two wax myrtle trees will border the parking area. Confederate Jasmine will cover the existing chain link fencing. The courtyard will be paved with red pavers over concrete. The Georgia gray granite monuments will include a site specific historical marker, a dedication marker, 6 five feet wide name inscription markers and 12 memorial markers.